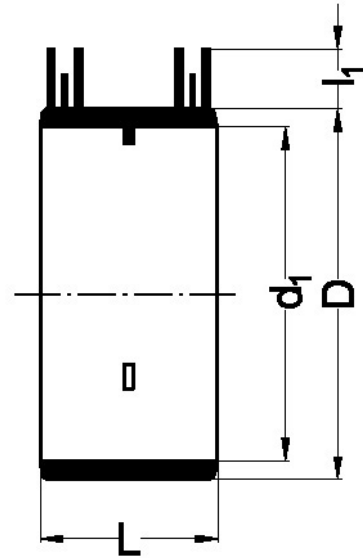


## Cuplaj de electrofuziune



| Referință | Kg    | n  | L   | d1  | D   | sistem    |
|-----------|-------|----|-----|-----|-----|-----------|
| 41 04 95  | 0,046 | 22 | 54  | 40  | 52  | 5A/80s    |
| 41 05 95  | 0,055 | 22 | 54  | 50  | 62  | 5A/80s    |
| 41 06 95  | 0,069 | 22 | 54  | 63  | 75  | 5A/80s    |
| 41 07 95  | 0,079 | 22 | 54  | 75  | 87  | 5A/80s    |
| 41 09 95  | 0,097 | 22 | 56  | 90  | 102 | 5A/80s    |
| 41 11 95  | 0,140 | 16 | 60  | 110 | 123 | 5A/80s    |
| 41 12 95  | 0,166 | 22 | 66  | 125 | 137 | 5A/80s    |
| 41 16 95  | 0,262 | 22 | 66  | 160 | 172 | 5A/80s    |
| 41 20 65  | 2,560 | 31 | 175 | 200 | 233 | 220V/420s |
| 41 25 65  | 2,560 | 31 | 175 | 250 | 283 | 220V/420s |
| 41 31 65  | 2,560 | 31 | 175 | 315 | 349 | 220V/420s |
| 41 56 95  | 0,062 | 22 | 54  | 56  | 68  | 5A/80s    |